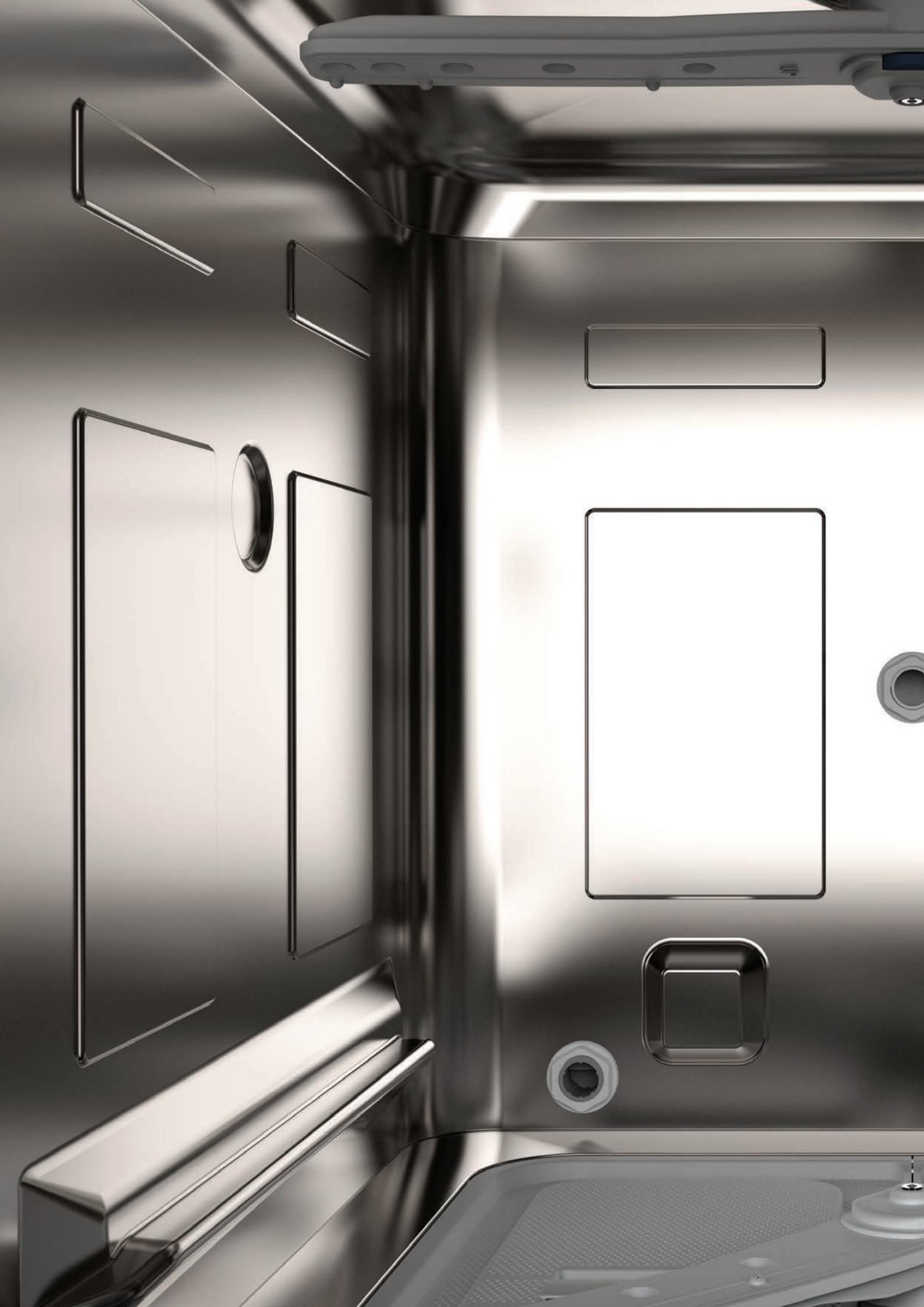


new Series 4

Innovation - Design - Performance

COLGEB
useful innovation



new Series 4

Innovation

CUSTOMER-DRIVEN INNOVATION: Leveraging New Technologies to Meet Diverse Needs

We place our customers at the heart of innovation, continuously exploring new technologies, systems, and solutions to address their evolving needs. By staying ahead of trends and integrating cutting-edge advancements, we ensure that our offerings are always aligned with the diverse requirements of our customers.

SMART: innovative solutions that make things simpler

SUSTAINABILITY: lower consumption, cost savings, and respect the planet

VERSATILITY: a solution for every requirement

WORK STATION CARE: comfort and safety



Design

a new **DESIGN** that is both functional and unique, with distinctive details and premium **Made in Italy** materials.

Performance

Energy savings of up to **60%**

Water savings of up to **25%**

Productivity increased by up to **150%**

Top-level energy efficiency: reduction of heat loss by up to **75%**



About Us!



More than 60 years of excellence in professional warewashing – innovation and quality dedicated to Ho.Re.Ca. professionals.

Over 60 Years of Italian Excellence in Professional Warewashing.

Founded more than six decades ago in Italy, our company has grown into a globally recognized leader in the field of professional warewashing. From the very beginning, our commitment to quality, innovation, and attention to detail has shaped everything we do. Today, we are proud to bring Italian expertise and craftsmanship to over 80 countries around the world.

Rooted in a strong tradition of engineering and design, we have continuously evolved to meet the changing needs of the market. Our broad and ever-growing range of products reflects our dedication to delivering reliable, high-performance, and sustainable solutions for the Ho.Re.Ca. sector and beyond.

Our global presence is supported by a trusted network of partners and distributors, ensuring that our customers receive expert support and immediate service—no matter where they are. This international reach, combined with our deep Italian heritage, is what makes our brand unique.

Innovation is at the heart of our mission. With a highly skilled team and continuous investment in research and development, we create advanced technologies that improve workflows, increase efficiency, and raise hygiene standards—helping professionals focus on what they do best.

As we look to the future, we remain true to our values: Italian quality, forward-thinking design, and a passion for excellence. With the continued trust of our customers and the dedication of our people, we are excited to shape the next chapter of our journey—bringing more innovation, more sustainability, and more Italian ingenuity to the world.

Global Customer Support!

Global Customer Support is our signature approach - a relationship model through which every activity is carried out in close synergy with our partners.



From the earliest development stages to after-sales support, technical consulting, and ongoing training, we stand by our customers every step of the way—offering dedicated services and flexible tools designed to be close to people and their needs.

After-Sales

A team of specialized technicians dedicated to supporting customers in the most complex after-sales activities—where speed, expertise, and responsiveness come together to deliver excellence.

Pre-Sales

Qualified professionals providing expert support and guidance—identifying customer needs and recommending the most suitable solutions.

Academy

Structured learning paths and tailored programs designed to provide comprehensive technical and commercial training—ensuring continuous development and up-to-date expertise.

Taylor-Made Solutions

Custom solutions designed to meet the specific needs of the Ho.Re.Ca. world—delivering precision, performance, and flexibility where it matters most.

We also develop next-generation devices and applications, diagnostics, telemetry, and remote support solutions to be constantly at our customers' side.

service

With Eurotec Service, we take care of the entire product life cycle and are able to ship over 6,000 product references within 24 hours to any country in the world, meeting the demands of increasingly demanding markets.



Experience the New!

What's New? – Innovations with Direct Benefits

As a customer, you know how important a reliable, economical, and easy-to-use dishwasher is. We have listened carefully to what truly matters in practice and, with numerous innovations, developed a new generation of dishwashers that significantly simplify your daily workflow.

Lower Costs, Greater Sustainability

Energy and water costs play a crucial role in gastronomy and commercial operations – every euro saved counts. Our specifically enhanced technology targets this very issue, enabling further reductions in operating costs compared to the previous series. While earlier models of the 3.0 series already achieved high efficiency, the new generation sets even higher benchmarks. To make this progress tangible, we present you with a direct comparison.

The test results were analyzed by an independent laboratory, and the stated operating costs as well as wash quantities are based on average values. We are happy to calculate your individual operating costs – just get in touch with us!

Basic Data: Electricity Cost: 30.0 cents per kWh Water & Wastewater Cost: €0.01 Cost per Dosage – Cleaner: €5.00 per kg (2.5 g per liter) Cost per Dosage – Rinse Aid: €2.50 per liter (0.3 ml per liter) Workload: 300 days, 10 hours per day, 50 cycles per day	Undercounter		
	actual series top^{tech} 36-23 D	new Series COLGED 4.0 top^{tech} plus 46-33 D	new Series COLGED 4.0 Premium Line ultra^{tech} 46-43 D
Initial Fill - Energy consumption	1,183 kWh	1,180 kWh	1,090 kWh
Energy consumption - per cycle	0,261 kWh	0,266 kWh	0,220 kWh
Standby mode - power consumption	0,134 kW	0,110 kW	0,110 kW
Energy costs / per day	4,60€	4,61€	3,90€
Initial Fill - Water consumption	13,1 liter	13,6 liter	14,9 liter
Water consumption - per cycle	1,7 liter	1,5 liter	1,5 liter
Cost for water + wastewater / per day	0,98€	0,90€	0,89€
Cost for cleaner / per day	1,23€	1,12€	1,11€
Cost for rinse aid / per day	0,07€	0,07€	0,07€
Total costs per year	2.065,43€	2.011,24€	1.788,18€
Comparison to the current Series 3.0		+2,69%	+15,50%
Date & Time - Data status	05.02.2025 - 10:35		

Basic Data: Electricity Cost: 30.0 cents per kWh Water & Wastewater Cost: €0.01 Cost per Dosage – Cleaner: €5.00 per kg (2.5 g per liter) Cost per Dosage – Rinse Aid: €2.50 per liter (0.3 ml per liter) Workload: 300 days, 10 hours per day, 100 cycles per day	Hood-type Dishwasher			
	actual series top^{tech} 38-23 D	new Series COLGED 4.0 top^{tech plus} 48-33 D	with NRGSteam Heat Recovery from Exhaust Air	new Series COLGED 4.0 Premium Line ultra^{tech} 48-43 D
Initial Fill - Energy consumption	2,193 kWh	1,590 kWh	1,600 kWh	1,530 kWh
Energy consumption - per cycle	0,342 kWh	0,305 kWh	0,290 kWh	0,290 kWh
Standby mode - power consumption	0,191 kW	0,220 kW	0,270 kW	0,180 kW
Energy costs / per day	11,31€	10,12€	9,78€	9,56€
Initial Fill - Water consumption	24,9 liter	20,1 liter	21,6 liter	20,0 liter
Water consumption - per cycle	1,9 liter	1,5 liter	1,4 liter	1,3 liter
Cost for water + wastewater / per day	2,15€	1,70€	1,62€	1,50€
Cost for cleaner / per day	2,69€	2,13€	2,02€	1,88€
Cost for rinse aid / per day	0,16€	0,13€	0,12€	0,11€
Total costs per year	4.892,67€	4.221,36€	4.059,71€	3.913,39€
Comparison to the current Series 3.0		+15,90%	+20,52%	+25,02%
Date & Time - Data status	05.02.2025 - 10:35			

The result: Noticeable savings in water, electricity, and cleaning agents – all while maintaining consistently high or even improved cleaning performance.

In addition to the financial benefits, every wash cycle actively helps protect the environment and reduces your ecological footprint. Reduced resource consumption not only means lower bills but also makes a sustainable contribution to the future.



Experience Even More New Innovations!

Maximum Flexibility for Your Operation

Every operation has different requirements – which is why the new machines offer up to 32 wash programs, each tailored to your specific needs. You can now effortlessly choose between various programs for glasses, plates, cutlery, plastic tableware, or even bottles. Thanks to innovative layout concepts, even larger items like GN containers or bulky kitchen utensils can be washed without any hassle.

In addition, the new series complies with the latest hygiene standards according to EN 17735:2022, which define clear test criteria and minimum requirements for hygiene, cleaning performance, and safety. Adhering to this standard ensures that the machine delivers a demonstrably high level of hygiene performance and meets the highest cleanliness standards.

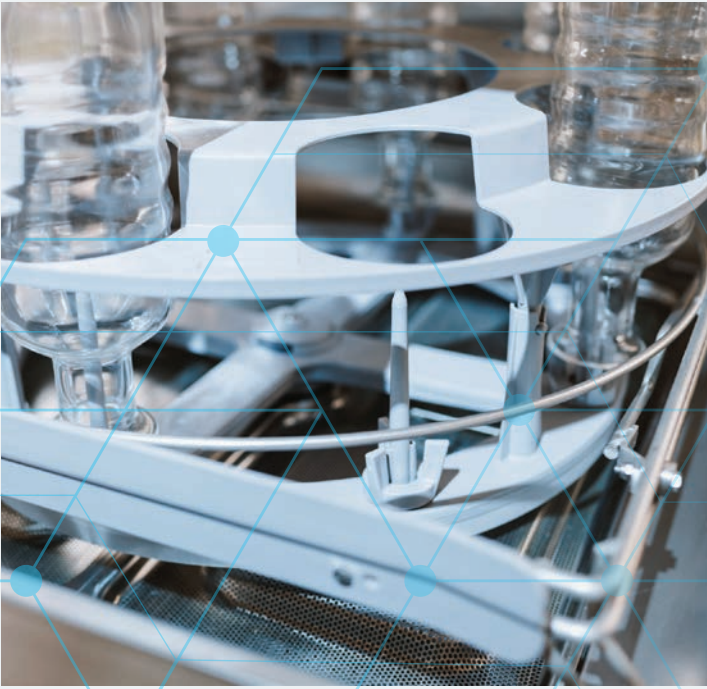
Operation? – Simpler Than Ever Before.

With the new COLGED 4.0 machine generation, complicated adjustments and guesswork are a thing of the past. The user-friendly control interface makes washing a breeze – whether your machine is equipped with a clearly structured touchscreen or traditional control elements. The intuitively designed displays and clear menu allow your staff to easily select the desired wash cycle, saving time and reducing errors caused by complex settings.

Great emphasis has also been placed on ergonomics. The control panel above the hood simplifies machine operation, while the innovative ProGlide technology ensures that opening and closing the hood is exceptionally smooth – requiring less effort and providing a more comfortable working experience. A significant advancement is the angled handle, now integrated into all models. This new design not only improves ergonomics and reduces wrist strain, but also helps lower injury rates. At the same time, the new handle design increases flexibility for custom solutions, as the feed and discharge tables can be adjusted even more effectively.

Additionally, complete sound insulation creates a more pleasant work environment by significantly reducing noise levels during operation. This ensures that your employees enjoy a quieter workspace and can focus better on their tasks.

With these thoughtful improvements, the new COLGED 4.0 machines offer enhanced comfort, safety, and efficiency – making your dishwashing operations noticeably easier and more effective.



new product lines

designed to meet all needs.

Discover our 6 new product lines – customized solutions tailored precisely to your needs.

With Italian creativity and precision, we have transitioned from COLGED 3.0 to COLGED 4.0, significantly enhancing the value of our machines through targeted optimizations. We have focused on the features most appreciated during the purchasing process – such as improved controls and additional features that, based on competitive analyses, offer genuine added value. Whether you are a dealer presenting innovative, high-quality products to your customers or an end consumer who values functionality and aesthetics, our solutions excel in every way. Experience how “Made in Italy” sets new standards with passion and style, enriching your daily life sustainably. An overview of the 6 series – the right solution for every requirement:

ultra tech

The **premium** range defined by **excellence** in every aspect. Exclusive technologies, top-tier performance, and unmatched efficiency.



top tech plus

The **evolution** of the toptech range boasts superior craftsmanship and new features, including the integrated Gateway. With high performance, digital capabilities, and an eco-friendly design, it is ready for the 5.0 transition plan.



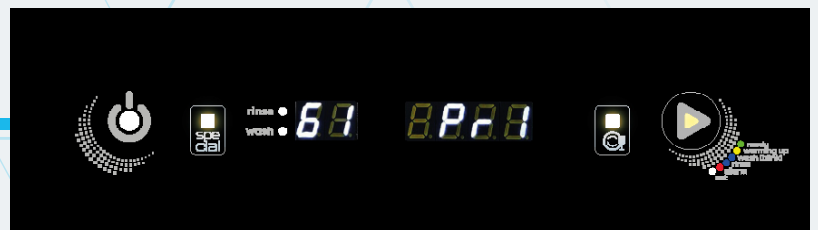
top tech

A longstanding reference for advanced technologies and top performance, now featuring a **modern and functional** redesign that seamlessly blends the past, present, and future.

pro^{tech}

A completely **new** range, developed from ITW's design philosophy and the full implementation of Useful Innovation.

Modern - Reliable - Unique.

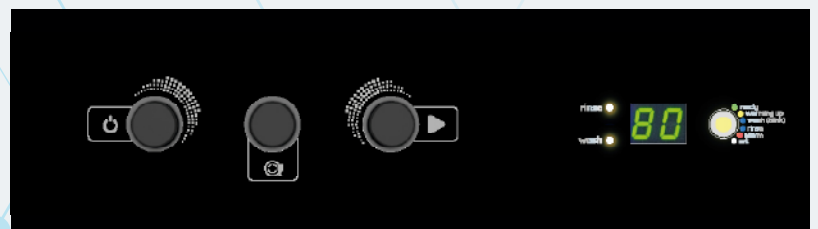


isy^{tech}

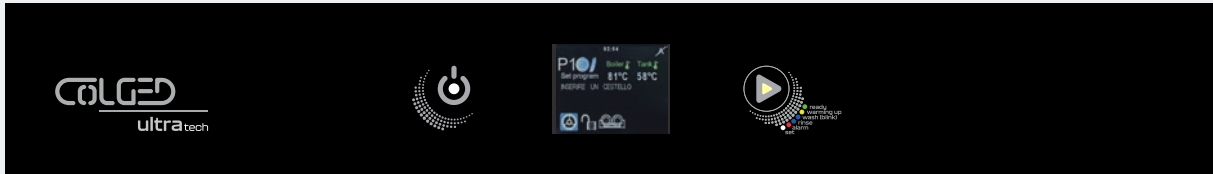
Outstanding performance paired with a user-friendly and enjoyable experience, driven by strategic construction and technology choices. It is both **competitive and successful** in the **mid-market** segment.

steel^{tech}

The **entry-level** benchmark for quality! With the durability of electromechanical controls, an intuitive interface, and refined construction, these products are unmatched in their segment.



ultra_{tech}



With UltraTech, we are setting new standards in the premium segment. This fully equipped product line, positioned at the top of the COLGED portfolio, has been developed with the utmost precision and cutting-edge technology. It combines maximum efficiency with intelligent design - tailored for professional users who demand top-tier performance, ease of use, and long-lasting durability.

Only UltraTech offers exclusive innovations that revolutionize the washing process - delivering maximum productivity, energy savings, and user-friendliness.

Highlights

Higher Capacity & Greater Flexibility

Optimized Loading Height – 400 mm instead of 385 mm, ideal for larger dishware.

BistroPro – Dual Rack Function for Maximum Efficiency: Enables simultaneous washing of cups and saucers using sliding wire racks on rails and dedicated wash programs. Flexible usage thanks to the removable upper rack.

ProLift – Automatic Hood Opening for Enhanced Convenience: Allows opening and closing via push-button; optionally controllable via an external mechanical switch up to 2 meters away—ergonomic, practical, and efficient.

Maximum Energy Efficiency & Sustainability

Wastewater Heat Recovery System – for optimized energy savings.

Reduced Boiler / Tank Heating Power – more efficient without compromising performance.

New ProDrain4 Triple Filter System – for even better water quality.

Intuitive Operation & Premium Materials

TFT Full-Touchscreen (2.8") – with two capacitive keys, including an RGB function key for Polnt machine status indication.

Integrated Wi-Fi

Smart Configuration Concept – Up to 32 pre-configured wash programs grouped logically, allowing the machine to suggest the most suitable programs for your operation.

Scratch-Resistant Front Panel – 2 mm thick, high-quality synthetic glass for durability and elegant design.

The newly developed structure highlights its premium quality with a wash chamber made of high-gloss polished stainless steel—ensuring maximum hygiene and a refined look.

the premium range

Engineered to impress. Excellence, redefined.



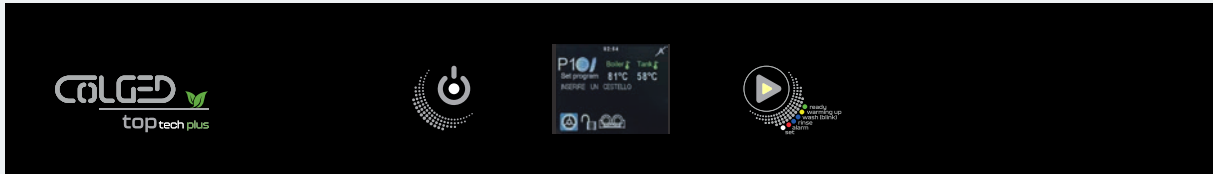
ultra tech

no Softener (D)

with Softener (SD / TD)

	no Softener (D)	with Softener (SD / TD)
Glasswasher - rack size 35 x 35 cm		
Glasswasher - rack size 40 x 40 cm		
Glasswasher - rack size 40 x 40 cm (integrated Osmosis) - WaterMaster		
Glasswasher - rack size 45 x 45 cm		
Glasswasher - rack size 50 x 50 cm		
Glasswasher - rack size 50 x 50 cm (integrated Osmosis) - WaterMaster		
Dishwasher - rack size 50 x 50 cm	X	X
Dishwasher - rack size 50 x 50 cm (Double Rack Version) - BistroPro	X	
Dishwasher - rack size 50 x 60 cm		
Front loading Dishwasher - rack size 50 x 50 cm		
Front loading Dishwasher - rack size 50 x 60 cm		
Hood-Type Machines - rack size 50 x 50 cm	X	X
Hood-Type Machines - rack size 50 x 50 cm (Automatic Hood Lift) - ProLift	X	
Hood-Type Machines - rack size 50 x 50 cm (Steam Heat Recovery System) - NrgSteam	X	X
Hood-Type Machines - rack size 50 x 60 cm	X	
Hood-Type Machines - rack size 50 x 60 cm (Steam Heat Recovery System) - NrgSteam	X	

top tech plus



TopTech Plus is the consistent evolution of the proven TopTech range - offering noticeable improvements in performance, user comfort, and sustainability. This product range combines advanced technology with high efficiency, providing a reliable and powerful solution for professional users. TopTech Plus stands for a well-balanced combination of quality, functionality, and intuitive operation

– making it the smart choice for modern kitchens that value performance without compromise.

Highlights

Higher Capacity & Greater Flexibility

Optimized Loading Height – 400 mm instead of 385 mm, ideal for larger dishware.

The proven HiTech wash arm has been further improved and now features inspection openings, making cleaning significantly easier.

WaterMaster – Glasswasher with Integrated Reverse Osmosis System: Centralized control of both wash and osmosis functions via the user interface – simple, efficient, and perfectly coordinated.

BistroPro – Dual Rack Function for Maximum Efficiency: Enables simultaneous washing of cups and saucers using sliding wire racks on rails and dedicated wash programs. Flexible usage thanks to the removable upper rack.

ProLift – Automatic Hood Opening for Enhanced Convenience: Allows opening and closing via foot pedal or push-button; optionally controllable via an external mechanical switch up to 2 meters away—ergonomic, practical, and efficient.

Maximum Energy Efficiency & Sustainability

Reduced Boiler / Tank Heating Power – improved energy efficiency without compromising performance.

New ProDrain4 Triple Filter System – for even better water quality.

Intuitive Operation & Premium Materials

TFT Full-Touchscreen (2.8") – with two capacitive buttons, including an RGB function key for PoInt machine status indication.

Integrated Wi-Fi

Smart Configuration Concept – Up to 23 pre-configured wash programs grouped for clarity, allowing the machine to suggest the optimal programs for your operation.

Scratch-Resistant Front Panel – 2 mm thick, high-quality synthetic glass for durability and sleek design.

The newly developed construction highlights its premium quality with a wash chamber made of high-gloss polished stainless steel—for maximum hygiene and an elegant appearance.

the advanced range

Intelligent tech. Sustainable power.



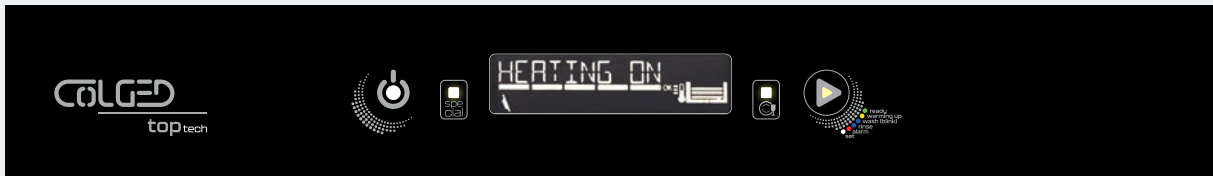
top tech plus 

no Softener (D)

with Softener (SD / TD)

	no Softener (D)	with Softener (SD / TD)
Glasswasher - rack size 35 x 35 cm		
Glasswasher - rack size 40 x 40 cm	X	X
Glasswasher - rack size 40 x 40 cm (integrated Osmosis) - WaterMaster	X	
Glasswasher - rack size 45 x 45 cm		
Glasswasher - rack size 50 x 50 cm	X	X
Glasswasher - rack size 50 x 50 cm (integrated Osmosis) - WaterMaster	X	
Dishwasher - rack size 50 x 50 cm	X	X
Dishwasher - rack size 50 x 50 cm (Double Rack Version) - BistroPro	X	
Dishwasher - rack size 50 x 60 cm	X	
Front loading Dishwasher - rack size 50 x 50 cm		
Front loading Dishwasher - rack size 50 x 60 cm	X	
Hood-Type Machines - rack size 50 x 50 cm	X	X
Hood-Type Machines - rack size 50 x 50 cm (Automatic Hood Lift) - ProLift	X	
Hood-Type Machines - rack size 50 x 50 cm (Steam Heat Recovery System) - NrgSteam	X	X
Hood-Type Machines - rack size 50 x 60 cm	X	
Hood-Type Machines - rack size 50 x 60 cm (Steam Heat Recovery System) - NrgSteam	X	

top tech



A longstanding reference in the world of professional warewashing, TopTech has always stood for advanced technology and reliable performance. Now, with a modern and functional redesign, the series enters a new chapter—blending the heritage of proven solutions with the evolving demands of today's kitchens.

TopTech combines cutting-edge features with high efficiency, offering a solid and dependable solution for professional users who value intuitive operation, energy savings, and consistent results. With its smart balance of quality, functionality, and user-friendliness, TopTech is designed for those who expect more—day after day, task after task.

Highlights

Higher Capacity & Greater Flexibility

Optimized Loading Height – 400 mm instead of 385 mm, ideal for larger dishware.

The proven HiTech wash arm has been further improved and now features inspection openings, making cleaning significantly easier.

WaterMaster – Glasswasher with Integrated Reverse Osmosis System: Centralized control of both wash and osmosis functions via the user interface – simple, efficient, and perfectly coordinated.

BistroPro – Dual Rack Function for Maximum Efficiency: Enables simultaneous washing of cups and saucers using sliding wire racks on rails and dedicated wash programs. Flexible usage thanks to the removable upper rack.

ProLift – Automatic Hood Opening for Enhanced Convenience: Allows opening and closing via push-button; optionally controllable via an external mechanical switch up to 2 meters away—ergonomic, practical, and efficient.

Maximum Energy Efficiency & Sustainability

Reduced Boiler / Tank Heating Power – improved energy efficiency without compromising performance.

New ProDrain4 Triple Filter System – for even better water quality.

Intuitive Operation & Premium Materials

TFT Display – Easy to read with white text on a black background; features scrolling icons and text for intuitive navigation

Up to 16 Selectable Programs – High flexibility to meet diverse washing needs

Scratch-Resistant Front Panel – 2 mm thick, high-quality synthetic glass for durability and elegant design.

The newly developed structure highlights its premium quality with a wash chamber made of high-gloss polished stainless steel—ensuring maximum hygiene and a refined look.

the efficient range

Everyday performance, effortlessly smart.



top tech

no Softener (D)

with Softener (SD / TD)

	no Softener (D)	with Softener (SD / TD)
Glasswasher - rack size 35 x 35 cm		
Glasswasher - rack size 40 x 40 cm	X	X
Glasswasher - rack size 40 x 40 cm (integrated Osmosis) - WaterMaster	X	
Glasswasher - rack size 45 x 45 cm		
Glasswasher - rack size 50 x 50 cm	X	X
Glasswasher - rack size 50 x 50 cm (integrated Osmosis) - WaterMaster	X	
Dishwasher - rack size 50 x 50 cm	X	X
Dishwasher - rack size 50 x 50 cm (Double Rack Version) - BistroPro	X	
Dishwasher - rack size 50 x 60 cm	X	
Front loading Dishwasher - rack size 50 x 50 cm		
Front loading Dishwasher - rack size 50 x 60 cm	X	
Hood-Type Machines - rack size 50 x 50 cm	X	X
Hood-Type Machines - rack size 50 x 50 cm (Automatic Hood Lift) - ProLift	X	
Hood-Type Machines - rack size 50 x 50 cm (Steam Heat Recovery System) - NrgSteam	X	X
Hood-Type Machines - rack size 50 x 60 cm	X	X
Hood-Type Machines - rack size 50 x 60 cm (Steam Heat Recovery System) - NrgSteam	X	

pro tech



ProTech is the new generation of professional dishwashing technology—developed to deliver top-tier performance with an intuitive, user-focused interface. Built from the ground up to meet the evolving needs of modern kitchens, ProTech stands for efficiency, reliability, and smart operation in every detail.

With a refined design, robust construction, and advanced control system, this new series is ideal for small to mid-sized operations seeking maximum performance with minimal complexity. Every element of ProTech has been carefully engineered to simplify workflows, enhance hygiene, and reduce energy consumption—without compromising on flexibility or wash quality.

Whether in restaurants, cafés, or catering environments, ProTech offers a powerful, ergonomic, and forward-thinking solution for professionals who value technology that works for them.

Highlights

Higher Capacity & Greater Flexibility

Optimized Loading Height – 400 mm instead of 385 mm, ideal for larger dishware.

The proven HiTech wash arm has been further improved and now features inspection openings, making cleaning significantly easier.

WaterMaster – Glasswasher with Integrated Reverse Osmosis System: Centralized control of both wash and osmosis functions via the user interface – simple, efficient, and perfectly coordinated.

BistroPro – Dual Rack Function for Maximum Efficiency: Enables simultaneous washing of cups and saucers using sliding wire racks on rails and dedicated wash programs. Flexible usage thanks to the removable upper rack.

ProLift – Automatic Hood Opening for Enhanced Convenience: Allows opening and closing via push-button; optionally controllable via an external mechanical switch up to 2 meters away—ergonomic, practical, and efficient.

Maximum Energy Efficiency & Sustainability

Higher Boiler / Reduced Tank Heating Power – Enhanced energy efficiency with no loss of performance.

Advanced Triple Filter System – Improves wash results and simplifies maintenance.

Upgraded Tank Filter with Integrated Fine Mesh – More effective filtration with improved ergonomics.

Modern Interface & Premium Materials

Dual LED Displays – Clear temperature display and user guidance with four capacitive buttons, including an RGB Point function key for instant machine status indication.

Scratch-Resistant Front Panel – 2 mm thick, high-quality synthetic glass for durability and sleek aesthetics.

Program Selection Made Easy – Separate access to standard and special programs, with up to 15 wash cycles for greater control and flexibility.

Top-Mounted Controls – For better visibility and a refined design.

Side Rack Holders in Composite Material – Gentle on racks, durable in daily use.

the professional range

Built for pressure. Trusted by professionals.



	pro tech	
	no Softener (D)	with Softener (SD / TD)
Glasswasher - rack size 35 x 35 cm		
Glasswasher - rack size 40 x 40 cm	X	X
Glasswasher - rack size 40 x 40 cm (integrated Osmosis) - WaterMaster	X	
Glasswasher - rack size 45 x 45 cm		
Glasswasher - rack size 50 x 50 cm	X	X
Glasswasher - rack size 50 x 50 cm (integrated Osmosis) - WaterMaster	X	
Dishwasher - rack size 50 x 50 cm	X	X
Dishwasher - rack size 50 x 50 cm (Double Rack Version) - BistroPro	X	
Dishwasher - rack size 50 x 60 cm	X	
Front loading Dishwasher - rack size 50 x 50 cm		
Front loading Dishwasher - rack size 50 x 60 cm	X	
Hood-Type Machines - rack size 50 x 50 cm	X	X
Hood-Type Machines - rack size 50 x 50 cm (Automatic Hood Lift) - ProLift	X	
Hood-Type Machines - rack size 50 x 50 cm (Steam Heat Recovery System) - NrgSteam	X	X
Hood-Type Machines - rack size 50 x 60 cm	X	X
Hood-Type Machines - rack size 50 x 60 cm (Steam Heat Recovery System) - NrgSteam	X	

isytech



The IsyTech range has been thoughtfully enhanced to combine outstanding performance with intuitive operation. With targeted design and technology choices, it offers a user-friendly interface that takes efficiency and convenience to the next level.

Particularly well-suited for small to mid-sized operations, IsyTech stands out for its competitiveness, versatility, and reliable performance. It is the ideal choice for professionals who value quality and innovation—without sacrificing ease of use or efficient operation.

Highlights

Higher Capacity & Greater Flexibility

Optimized Hood Opening – 470 mm instead of 450 mm, ideal for larger dishware.

Larger Tank Volume (20L) – Less dirt in the tank and improved wash performance for passthrough dishwashers.

The proven HiTech wash arm has been further improved and now features inspection openings, making cleaning significantly easier.

ProGlide Technology – Now standard in the IsyTech range: smooth and effortless hood movement for enhanced ergonomics and everyday comfort.

Maximum Energy Efficiency & Sustainability

Increased Boiler Power & Reduced Tank Heating Load – Higher energy efficiency without compromising performance.

New Triple Filter System – Improves washing results and simplifies maintenance.

Upgraded Tank Filter with Integrated Fine Mesh – More effective and ergonomic filtration.

Modern Interface & Premium Materials

Two Large LED Displays – Clear temperature display and intuitive guidance with four capacitive buttons, including an RGB Point function key for immediate machine status indication.

Scratch-Resistant Front Panel – 2 mm thick, high-quality synthetic glass for durability and an elegant look.

Separate Selection for Standard & Special Programs – Up to 15 wash programs for even more control and flexibility.

Top-Mounted Controls – For better visibility and a premium design feel.

Side Rack Supports in Composite Material – Protects wash racks and improves durability.

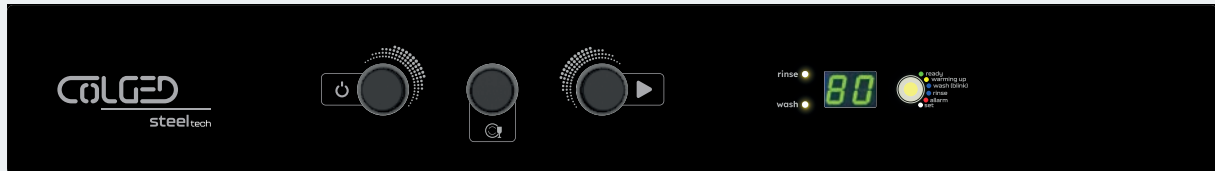
the compact range

Fits anywhere. Adapts to everything.



	isy tech	
	no Softener (D)	with Softener (SD / TD)
Glasswasher - rack size 35 x 35 cm		
Glasswasher - rack size 40 x 40 cm	X	
Glasswasher - rack size 40 x 40 cm (integrated Osmosis) - WaterMaster		
Glasswasher - rack size 45 x 45 cm	X	
Glasswasher - rack size 50 x 50 cm		
Glasswasher - rack size 50 x 50 cm (integrated Osmosis) - WaterMaster		
Dishwasher - rack size 50 x 50 cm	X	X
Dishwasher - rack size 50 x 50 cm (Double Rack Version) - BistroPro		
Dishwasher - rack size 50 x 60 cm		
Front loading Dishwasher - rack size 50 x 50 cm		
Front loading Dishwasher - rack size 50 x 60 cm		
Hood-Type Machines - rack size 50 x 50 cm	X	X
Hood-Type Machines - rack size 50 x 50 cm (Automatic Hood Lift) - ProLift		
Hood-Type Machines - rack size 50 x 50 cm (Steam Heat Recovery System) - NrgSteam		
Hood-Type Machines - rack size 50 x 60 cm		
Hood-Type Machines - rack size 50 x 60 cm (Steam Heat Recovery System) - NrgSteam		

steeltech



SteelTech is the perfect entry point into the world of professional warewashing—delivering solid performance, robust construction, and absolute ease of use. Designed for everyday reliability and simple operation, SteelTech is built to handle the essential demands of busy kitchens with maximum practicality and minimal complexity.

With a carefully engineered design, the series provides excellent washing results, efficient operation, and durable components—all at an accessible level. Its user-friendly interface and smart construction make it the ideal choice for those looking for a dependable solution without compromising on quality or efficiency.

Highlights

Higher Capacity & Greater Flexibility

Optimized Hood Opening – 470 mm instead of 450 mm, ideal for larger dishware.

Larger Tank Volume (20L) – Less dirt in the tank and improved wash performance for passthrough dishwashers.

ProGlide Technology – Now standard in the SteelTech range: smooth and effortless hood movement for enhanced ergonomics and everyday comfort.

Maximum Energy Efficiency & Sustainability

Increased Boiler Power & Reduced Tank Heating Load – Higher energy efficiency without compromising performance.

New Triple Filter System – Improves washing results and simplifies maintenance.

Upgraded Tank Filter with Integrated Fine Mesh – More effective and ergonomic filtration.

Boiler Heating Element with Thermal Fuse – More safety, more reliability

Modern Interface & Premium Materials

New LED Display – Green characters on black background, clear and easy to read

RGB Point Function Light – Instant status visibility at a glance

Three Robust Mechanical Buttons – Reliable, intuitive control

Top-Mounted Controls – For better visibility and a premium design feel.

Side Rack Supports in Composite Material – Protects wash racks and improves durability.

the durable range

Built to endure. Ready for anything.



steeltech

no Softener (D)

with Softener (SD / TD)

Glasswasher - rack size 35 x 35 cm	X	
Glasswasher - rack size 40 x 40 cm	X	
Glasswasher - rack size 40 x 40 cm (integrated Osmosis) - WaterMaster		
Glasswasher - rack size 45 x 45 cm	X	
Glasswasher - rack size 50 x 50 cm		
Glasswasher - rack size 50 x 50 cm (integrated Osmosis) - WaterMaster		
Dishwasher - rack size 50 x 50 cm	X	X
Dishwasher - rack size 50 x 50 cm (Double Rack Version) - BistroPro		
Dishwasher - rack size 50 x 60 cm		
Front loading Dishwasher - rack size 50 x 50 cm	X	
Front loading Dishwasher - rack size 50 x 60 cm		
Hood-Type Machines - rack size 50 x 50 cm	X	
Hood-Type Machines - rack size 50 x 50 cm (Automatic Hood Lift) - ProLift		
Hood-Type Machines - rack size 50 x 50 cm (Steam Heat Recovery System) - NrgSteam		
Hood-Type Machines - rack size 50 x 60 cm		
Hood-Type Machines - rack size 50 x 60 cm (Steam Heat Recovery System) - NrgSteam		

smart solutions
that make things simpler

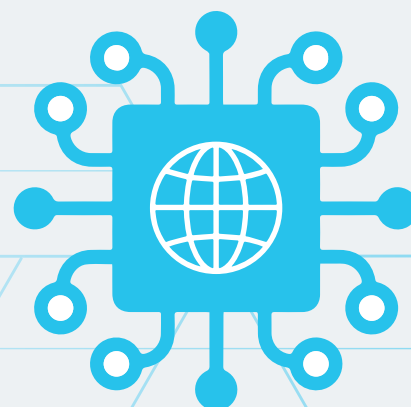


eurotec D.A.S. Digital After-sales Service

A suite of digital tools designed to streamline and accelerate after-sales technical support.

Quick and secure access to the Eurotec Service technical portal through the QR code on the machine, granting access to the full range of digital tools.

- Exploded diagrams
- Electrical schematics
- Firmware
- Installation diagrams
- Technical bulletins
- User guides
- Topographic maps
- Tutorial videos
- Spare parts availability and pricing
- Online spare parts orders
- Alarm and notification menu



sustainability solutions

for more savings and respect the planet.



duo_{flow}

Proven Pump System – More Efficiency, Less Noise

Our patented pump system uses two outlets and one inlet to drive both the lower and upper wash arms simultaneously. This increases efficiency by 25% and reduces noise levels by 3 dB.

pro_{drain}

Optimized Filtration for Maximum Efficiency

The triple filter system enhances the previous progressive filtration by incorporating finely graded filters with a mesh size of up to 0.5 mm, ensuring even more effective dirt capture and improved performance.

thermo_{stop}

Constant Wash Temperature for Maximum Hygiene

The ThermoStop function continuously monitors the wash water temperature in the boiler. If it falls below the set threshold, the wash time is automatically extended until the optimal temperature is reached – ensuring maximum hygiene safety and perfect drying.

energy_{saving}

Optimized Energy Usage

The EnergySaving function lowers the boiler temperature in standby mode and heats the water to the required temperature only shortly before the wash cycle. This reduces energy consumption and minimizes limescale buildup without affecting washing performance.

hot_{wash}

Constant Heat for Faster Washing and Drying Times

The HotWash heating system uses independent heating elements and optimized power control to keep the tank at a constant temperature even during frequent wash cycles. This prevents temperature drops, shortens wash times, and improves drying – resulting in hotter dishes, reduced cleaning agent consumption, and maximum efficiency.

evo_{lution}

Clean Water for Better Washing Results

The innovative EvoLution3 drainage system automatically removes dirty wash water from the bottom of the tank using a pump – immediately after the main wash cycle and before the rinse phase. The continuous water exchange ensures superior water quality and reduces cleaning agent consumption by 20% – resulting in more efficient and hygienic washing.

eco_{drain}

Heat recovery from drain water.

An innovative system that captures and reuses the heat from wastewater, preventing it from being wasted. This results in a significant reduction in energy consumption per cycle, in line with the EN63136:2019 standard.



pro_{rinse}

Constant Water Pressure for Perfect Washing Results

The innovative ProRinse wash system ensures optimal cleaning results regardless of installation conditions. Thanks to its open boiler, rinse pump, and intermediate storage tank, it guarantees uniform water pressure, stable flow, and constant temperatures – ensuring consistently reliable wash performance.

versatility solutions

for every requirement.



bistro_{pro}



Double Rack Function for Maximum Efficiency

BistroPro technology has been specifically designed to optimize and speed up the washing of cups and saucers during the morning shift. Two sliding wire racks on dedicated rails and a tailor-made wash program ensure efficient utilization.

For maximum flexibility, the upper rack can be easily removed, allowing the dishwasher to be used as usual in subsequent shifts. The perfect solution for a smooth and efficient bistro routine!

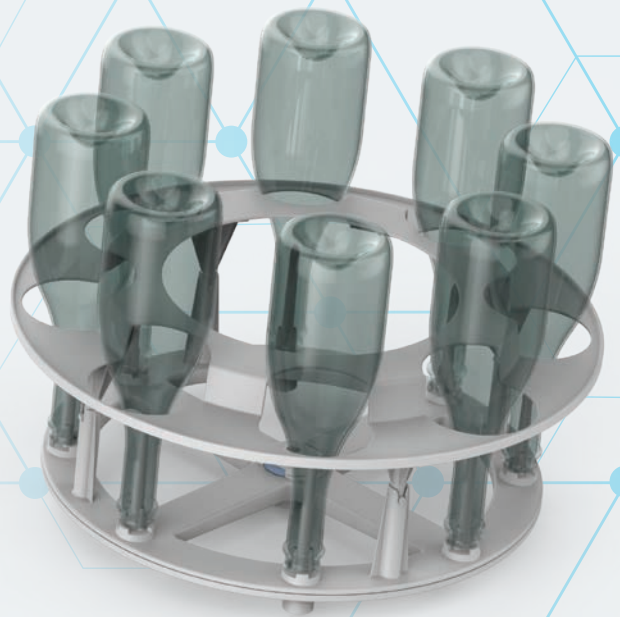


bottlemaster_{pro}

Special Solution for Bottle Cleaning

The BottleMasterPro bottle washing system has been developed for hygienic and efficient cleaning. The patented basket for 8 bottles, with integrated wash and rinse jets, is mounted directly on the lower wash arm bracket, replacing the conventional wash arm.

The IsyTech, ProTech, TopTech, TopTech Plus and UltraTech ranges feature specially tuned bottle washing programs that optimize the cleaning process and ensure consistent, first-class hygiene.



multi_{power}



Flexible Power Adaptation for Maximum Compatibility

The Multipower system allows operation with various voltages and power levels, enabling the device to be flexibly adapted to different electrical installations – always safely and in compliance with all applicable regulations.

CALGEO		CE	
ELETTEC S.p.A. Via S. Giorgio, 24 - 33045 S. Pietro di Legnago (VR) ITALY <td colspan="2">MADE IN ITALY</td>		MADE IN ITALY	
Code: 919524	DISHWASHER	Date: 08/07/2024	
Mod: TOPTECH 46-23D	S/n: 3209662	IP: X4	
□ 400 V 3N~	50 Hz	7,50 kW	⇔ 16,0 A
□ 400 V 3N~	50 Hz	5,50 kW	⇔ 16,0 A
□ 230 V 3~	50 Hz	5,50 kW	⇔ 16,0 A
□ 230 V 1N~	50 Hz	3,50 kW	⇔ 16,0 A
10÷50 °C			
1,0÷4,0 bar			
100÷400 kPa			

water_{master}



Glasswasher Machines with Integrated Reverse Osmosis System

The new glasswasher machines with integrated reverse osmosis system offer easy control of operating parameters directly via the device's user interface. This greatly simplifies operation, and both systems can be managed centrally and conveniently. In addition, the integrated pre-filter cartridge leads to significant space savings.

solutions for work station care

comfort and safety



access

Maintenance Made Easy

The Quick-Access system makes maintenance easier than ever. The drain pump is directly accessible from the wash chamber, allowing blockages caused by foreign objects to be quickly and effortlessly resolved – all without professional assistance.

This thoughtfully engineered design combines practical functionality with Italian style, ensuring a perfect balance of efficiency, user-friendliness, and design.

pro lift

Automatic Hood Opening for Effortless Comfort

ProLift technology combines intelligent engineering with maximum user convenience. The lift and close function can be easily activated via push button for fast, ergonomic operation.

For even more flexibility, the control can also be triggered by a mechanical button placed up to 2 meters away. A practical, well-thought-out, and stylish solution that makes workflows more efficient and comfortable.



pro soft

Gentle Wash Start for Maximum Care

With ProSoft, every wash cycle begins progressively as the washing intensity is gradually increased. This ensures gentle cleaning of delicate dishware and optimized water distribution for consistently even washing results.

inspect

Clear View for Maximum Hygiene

The wash arms with inspection openings allow for quick and thorough cleaning, ensuring that deposits can be effortlessly removed. This guarantees consistently high washing performance and provides efficient, reliable operation.

smart clean

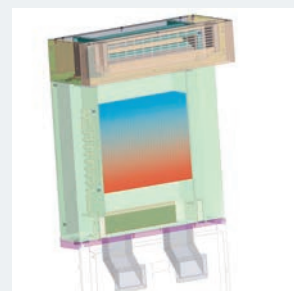
Self-Cleaning Design for Effortless Operation

The SmartClean construction minimizes maintenance at the end of each shift. The smooth, rounded surfaces—with no sharp edges or exposed pipes—prevent dirt buildup, while surface filters capture coarse particles and a triple filtration system blocks finer residues. The result is hygienic, efficient, and low-maintenance cleaning.

nrg steam

Sustainable Heat Recovery for Professionals

NRGSteam is the latest development in the NRG project, providing intelligent steam condensation. After washing, the steam is captured and condensed so that no steam escapes into the environment when the hood is opened – ensuring a more pleasant working atmosphere and reduced moisture exposure. Additionally, the system uses the recovered heat to preheat the incoming water, reducing energy consumption and eliminating the need for an exhaust hood. More efficiency, less energy – perfect for modern kitchens.



advantages

for the retailer



With COLGED 4, you as a specialist dealer benefit from a new generation of professional dishwashers specifically designed to optimize installation, maintenance, and service. Thanks to innovative technologies and intelligent system integration, handling is significantly simplified for dealers – resulting in faster processes, reduced operating costs, and satisfied customers.

Your Benefits as a Specialist Dealer:

Faster Installation & Easy Commissioning

Thanks to Multipower technology, the machine is flexibly prepared for both three-phase and single-phase power. Pre-set programs enable a smooth and quick setup, allowing your customers to get started without long waiting times.

Maintenance & Diagnostics Made Easy

Quick-Access technology provides direct access to the drain pump, enabling maintenance tasks to be performed quickly and effortlessly. The intuitive TFT touch interface with Polnt function makes all machine parameters individually adjustable – ensuring optimal performance.

Optimized Technical Support & Diagnostic Tools

With the visual machine status display and real-time monitoring, malfunctions can be immediately identified and addressed. Integrated data collection enables precise remote analysis, making support interventions more efficient and cost-effective.

Simplified Spare Parts Management

The modular design of the new series requires fewer spare parts, simplifying inventory and administration. Standardized spare parts codes lower costs and ensure faster availability.

COLGED 4 – More Technology, Same Investment, Maximum Efficiency

From rapid installation and easy maintenance to optimized support – with COLGED 4.0, you as a specialist dealer benefit from a more powerful, service-friendly, and economically attractive solution that provides tangible added value to you and your customers.

More efficiency, better performance – a true advantage for specialist dealers!

advantages

for the users



COLGED 4 has been developed to make your everyday work simpler, more efficient, and more economical. More flexibility, the highest hygiene standards, and intelligent technology provide noticeable relief and the best washing results – day after day.

Your Advantages:

More Productivity, Less Waiting Time

A more spacious washing chamber and specialized programs – such as BottleMasterPro for bottles – enable up to 150% higher washing capacity.

Hygiene at the Highest Level

Certified according to EN 17735:2022 with thermal disinfection to ensure consistently flawless, hygienic washing results.

Perfect Results Without Polishing

An automatic water softener and reverse osmosis deliver crystal-clear glasses and spotless dishes, even for delicate items.

Intuitive Operation, Smart Comfort

With a clear touchscreen, PoInt status display, ProGlide door opening, and ProLift hood automation, operating the machine is simpler than ever.

Less Consumption, More Savings

NRGSteam and EcoDrain heat recovery systems reduce water, energy, and detergent consumption – all without compromising performance.

Fast Cleaning, Easy Maintenance

Self-cleaning programs, dirt-free washing chambers, and the ProDrain4 triple filtration system minimize maintenance efforts – ensuring greater efficiency and durability.

COLGED 4 – Efficiency That Makes Your Everyday Life Easier

So you can focus on what truly matters: your guests.



Global Customer Support

At the core of our success is a model built entirely around our customers and their unique needs. We offer an integrated suite of tools and services, supported by a team of professionals who are always by your side to guide and assist. This commitment to personalized support ensures that we deliver exceptional value and create lasting relationships.



pre-sales consultancy



after-sales technical support



academy



service



member program



tailor made product

COLGED
useful innovation

Eurotec s.r.l. - divisione Colged

Via Provinciale Romana, 6 - 55011 Badia Pozzeveri - Altopascio (LU)

Tel. +39 0583 2783 - Fax +39 0583 276506

www.colged.it - info_colged@itweurotec.it